



*November 12 2007*

**In This Edition**

- **Today's Featured Temple**
- **Veterinary Notes by Rev. Mehitabel**
- **Anointing With the Ancients**
- **New Announcements**
- **Temple, Shrine, Order and Study Group Services**
- **Listed Orders & Study Groups**
- **Other Publications**
- **Correllian Herald Subscriptions**

**The Correllian Herald is a twice weekly publication on Monday and Thursday. For inclusion in this publication of you're, on and offline events, rituals, announcements and general Correllian related advertisements please send the details to the Editors:**  
*correllianheraldeditor@gmail.com*

**If you would like to submit articles for the Herald please email:**  
*correllianheraldeditor@gmail.com*

**The Correllian Herald is best viewed in pdf format:**  
Subscribe PDF Format: *CorrellianHerald-pdf-subscribe@yahoogroups.com*  
**Download a free copy of Adobe Reader:** <http://www.adobe.com/>

## Today's Featured Shrine

### Shrine of Angelic Healing Capelle aan den IJssel in The Netherlands The Personal Shrine of Rev. Annelies Hoornik



Shrine Sigil

**While studying the Correllian material and becoming clergy I have been wondering where the focus or specialization should be for me as a person. The Angels have influenced my life very strongly and the work they do through me and with me has been very successful and rewarding for me.**

**To me it makes perfect sense to follow this path further and specialize in Angelic Healing and pass information on to people interested in working with Angels and Archangels.**

**Helping others get in touch with Angels, be healed with angelic help and learn them to heal with the help of Angels is my way of giving something back to these lovely celestial beings.**

**Rev. Annelies**

**For more information please go here: <http://www.angelic-healing.nl/>  
Contact email: [angel@angelic-healing.nl](mailto:angel@angelic-healing.nl)**

**If you would like your Temple, Shrine or Order featured in the Herald please contact the editor: [correllianheraldeditor@gmail.com](mailto:correllianheraldeditor@gmail.com)**

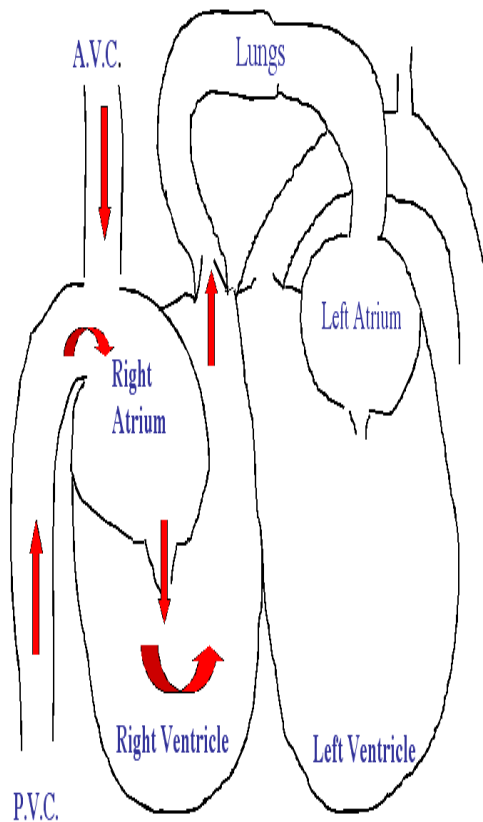
## Veterinary Notes – H is for heart (Part 1)

By Rev. Mehitabel

Note: Dogs and cats are not subject to coronary artery disease or “heart attacks”.

Congestive Heart Disease is a common problem in the older dog and will be the subject of this article. It does occur in cats but is less common. The usual form is left sided congestive heart disease characterised by a soft cough. Any cough in the older dog should be investigated without delay because prompt treatment increases the success of treatment.

The heart consists of two separate circulatory systems – the left and the right. The right atrium receives deoxygenated blood from the body, and passes this through the right ventricle and up through the pulmonary artery (the only artery to carry deoxygenated blood) to the lungs where it is re-oxygenated. The blood then returns to the heart via the pulmonary vein (the only vein carrying deoxygenated blood) to the left atrium, then to the left ventricle and on to the body via the aorta. The right side of the heart is a low pressure system and the left is a high pressure system and so the left ventricle is more muscular than the right. Backflow of blood within the heart is prevented by valves between the atria and ventricles and between the ventricles and the main exit vessels.



In L sided heart disease the mitral or bicuspid valve which separates the Left atrium from the left ventricle becomes leaky so that blood flows backward into the atrium when the heart contracts. This increases the pressure in the lungs causing fluid to be pushed out of the blood vessels and into the lung tissue. This results in the characteristic cough, breathlessness, loss of energy, exercise intolerance.

In R sided heart disease, the tricuspid valve between the right atrium and ventricle becomes leaky and this primarily affects the circulation in the body rather than the lungs leading to progressive abdominal distension and to breathlessness because the diaphragm is pushed upwards by the fluid compressing the chest cavity.

Treatment aims to support the heart function by making it beat more effectively and to reduce the fluid in the lungs through the use of diuretics. A wide range of treatments are available and some trial and error is needed to select the best drug and dose as each animal is very individual in its response. Although prognosis cannot be guaranteed, with prompt and effective treatment most dogs continue to have many happy years of life

## **Anointing With the Ancients**

Our ancestors used oils in ceremony and ritual hundreds and even thousands of years ago. Because many essential oils are still available, we can continue making our own blends today. In the past, oils were created by placing oil or fat over a heat source, and then adding fragrant herbs and flowers to the oil. Many companies today offer synthetic oils at a fraction of the cost of essential oils (essential oils are the ones actually extracted from a plant). However, for magical purposes it's best to use authentic, essential oils -- these contain the magical properties of the plant, which synthetic oils do not have.

### **The Basics of Blending**

While many commercial vendors would have you believe that there's some Super Secret Magical Method for blending oils, it's actually pretty simple.

First, determine your intent -- whether you are creating a money oil to bring you prosperity, a love oil to boost your romantic encounters, or a ritual oil to use in ceremony.

Once you've determined your intent, assemble the essential oils called for in the recipes. In a clean container, add 1/8 Cup of your base oil -- this should be one of the following:

Safflower  
Grapeseed  
Jojoba  
Sunflower  
Almond

Using an eyedropper, add the essential oils in the recipes. Be sure to follow the recommended proportions. To mix, don't stir... swirl. Swish the essential oils into the base oil by swirling in a clockwise direction. Make sure you store your oil blends in a place away from heat and moisture. Keep them in dark-colored glass bottles, and be sure to label them for use. Write the date on the label, and use within six months.

### **How to Use Your Oils**

There are a number of ways you can use your oils in a ritual setting. They are often rubbed on candles for use in spellwork - this blends the powerful energies of the oil with the magical symbolism of the candle's color and the energy of the flame itself.

Sometimes, oils are used to anoint the body. If you are blending an oil to use for this purpose, be sure that you're not including any ingredients that are irritating to the skin. Some essential oils, such as frankincense and clove, will cause a reaction in sensitive skin and should only be used very sparingly. Oils applied to the body bring the wearer the energies of the oil -- an Energy Oil will give you a much-needed boost, a Courage Oil will give you strength in the face of adversity.

Finally, crystals, amulets, talismans and other charms may be anointed with the magical oil of your choice.

This is a great way to turn a simple mundane item into an item of magical power and energy.

[http://paganwiccan.about.com/od/magicaloils/ss/Oils\\_Intro\\_2.htm](http://paganwiccan.about.com/od/magicaloils/ss/Oils_Intro_2.htm)

**. Announcements**

## Temple, Shrine & Order Upcoming Events Announcements

None advertised at this time

### Ongoing Announcements

#### Temples Taking Clergy Applications

- Mother Temple Please apply here: <http://www.correllian.com/application/main.asp> Or contact Lady Virginia at [virginia@witchschool.com](mailto:virginia@witchschool.com)
- Selu Temple Please apply to Lady Virginia [virginia@witchschool.com](mailto:virginia@witchschool.com) For outer court for Selu please contact Lady Windy [WINDY0716@aol.com](mailto:WINDY0716@aol.com)
- Sedna Temple Please apply here: <http://sednatemple.co.uk/> Or contact Lady Anna at [Lady-Anna@sednatemple.co.uk](mailto:Lady-Anna@sednatemple.co.uk)
- Clan of Kheper Temple Please apply here: <http://www.clanofkhepertemple.co.za/clergyapplications.php> Or contact Lady Raene at [applications@clanofkhepertemple.co.za](mailto:applications@clanofkhepertemple.co.za)

#### The Order of Web Weavers Crystal Web Mapping Project

The Order of the Web Weavers has been working diligently on mapping the Crystal Web. If any of you have a crystal that you have added or removed from the Crystal Web contact us to ensure are records up to date and accurate.

The information we need in order to best catalog your crystal/s is the following. Your Craft Name and E-mail Address along with your City, State, Country, Latitude, and Longitude. Sent to the following e-mail address: [wwcw@correllianorders.info](mailto:wwcw@correllianorders.info)

Please include the above information, if you have removed your crystal from the Crystal Web along with 'Remove' in the subject line. If you have added several crystals then we would need a separate entry for each crystal, unless they are located together. If they are located together then please include how many crystals are at that location.

We are excited about this project and hope that you will be too. Once the crystals have been properly cataloged we can then begin placing them on the map program. This will give us a good visualization on the Crystal Web. Thank you in advance for your participation in this wonderful project.

Bright Blessings,  
The Order of Web Weavers

## Temple, Shrine, Order and Study Group Services

### Online Rituals

- Shrine of Serenity

<http://www.shrineofserenity.bravehost.com/index.html>

**Healing Rituals Date:** last Thursday of the month Time: 9pm UK (BST) Place:

<http://www.shrineofserenity.bravehost.com/chat.html>

**Full Moon Rituals on the Date, Time:** 7PM GMT

Place: <http://www.shrineofserenity.bravehost.com/chat.html> For more information please contact the Shrine: [shrineofserenity@hotmail.co.uk](mailto:shrineofserenity@hotmail.co.uk) For inclusion in the Healing Rituals please contact

**Rev. Silver- Moonblossom:** [rev.silvermoonblossom@hotmail.com](mailto:rev.silvermoonblossom@hotmail.com)

- Animal Shrine of Sothistar *Animal Healing Rituals*

Rituals are held on the first Tuesday of each month at 9pm UK time. Requests for animal healing and/or to join the Shrine and group may be sent to me at [coatimundi@btinternet.com](mailto:coatimundi@btinternet.com)

For more information about the Shrine of Sothistar and online rituals please contact

**Rev. Mehitabel** [coatimundi@btinternet.com](mailto:coatimundi@btinternet.com)

- Sedna Temple Online Rituals

For all information on all of Sedna's online rituals please contact Lady Anna

[sednatemple@btinternet.com](mailto:sednatemple@btinternet.com)

**Sedna Healing Shrine Healing Rituals** Date: Every Friday except the last Friday in the month which are memorial rituals: Times: 9pm UK & 9pm EST

**Australian East Coast** 7pm. Place: <http://klik.to/healingshrine>

**Living Stones Memorial Shrine Memorial Rituals** Date: Last Friday in the month Times: 9pm UK & 9pm EST Place: <http://klik.to/memorial>

**Shrine of the Moon Moon Rituals** (Full & New) Date: On the actual date (will be announced) Times: 9pm UK & 9pm EST Place: <http://formalmoonshrine.bravehost.com/>

**8 Festival Shrine Sabbath online rituals dates are announced online**

**Healing Gaia Shrine Healing Gaia Rituals, monthly online rituals**

**Online Initiation Rituals** also provided by Sedna Temple on request. Contact [sednatemple@btinternet.com](mailto:sednatemple@btinternet.com) for more details

•

- The Proto-Temple of Sekhmet *Healing Rituals*

will be holding Healing rituals every Sunday

at 8PM EDT/EST. The link to the ritual room is on the Temple site at

[www.sekhmetravenwolf.ca](http://www.sekhmetravenwolf.ca)

For more information, contact Lady Mary at [mary120@sympatico.ca](mailto:mary120@sympatico.ca)

## Other Services Provided by Temples, Shrines & Orders

- **The World Wide Crystal Web Monthly Ritual**

The World Wide Crystal Web Club monthly ritual on the 11th of each month (Time you do the Ritual is up to you as long as it is done on the 11th.) The Ritual is for Hope, Peace, Love and Prosperity. The energy sent out through the Web is for anyone to use through out the world if they so desire. Ritual and instructions are in the file section of each group.

- **Clan of Kheper Temple (Platteklouf Glen, Cape Town - South Africa)**  
Temple membership open to all. On-going Correspondence and Bi-monthly one-on-one Correllian Degree classes.

Also available privately for Handfastings, Wiccanings, Initiations and Dedication Rituals.  
Contact: [rev\\_raene@clanofkheper temple.co.za](mailto:rev_raene@clanofkheper temple.co.za) or visit [www.clanofkheper temple.co.za](http://www.clanofkheper temple.co.za)

- **Temple of Our Lady of the Sacred Earth [www.sacredearth temple.com](http://www.sacredearth temple.com)**

P.O. Box 13033, Olympia, WA 98502

360-339-5235 (Leave a message) Classes, Rituals, Socials, Rites of Passage

For more details and information contact Rev. Isarma [lady@sacredearth temple.com](mailto:lady@sacredearth temple.com)

- **Green Man Temple, Norfolk England**  
Online rituals for all Sabbats, General get togethers on a fortnightly basis.  
Contact: [Polgara\\_sheppardz@ntlworld.com](mailto:Polgara_sheppardz@ntlworld.com)

- **Sedna Moon Shrine: <http://formalmoonshrine.bravehost.com/>**

*GMT/BST & EST times*

New Moon and Full Moon online rituals

Please see the Correllian Calendar for dates

Forum: <http://uk.groups.yahoo.com/group/Moon-Shrine/>

UK rituals start at 9pm GMT Second US rituals: 9pm EST Contact: Lady Anna: [annahp@btinternet.com](mailto:annahp@btinternet.com) Rev. Mick: [dotnmick@tiscali.co.uk](mailto:dotnmick@tiscali.co.uk) or Rev. Dragon Angel: [dragon\\_angel\\_22\\_ca@yahoo.ca](mailto:dragon_angel_22_ca@yahoo.ca) for more information.

- **Sedna Festival Shrine: <http://klik.to/festivals>**

Sabbat Online rituals

*Please see the Correllian Calendar for dates. GMT/BST & EST times or look for the announcements*

Forum: <http://uk.groups.yahoo.com/group/festivalshrine>

UK rituals start at 9pm Second US rituals: 9:pm EST

Contact: Rev. Anna: [annahp@btinternet.com](mailto:annahp@btinternet.com), Rev. Mick: [dotnmick@tiscali.co.uk](mailto:dotnmick@tiscali.co.uk) or Rev. Mehitabel: [coatimundi@btinternet.com](mailto:coatimundi@btinternet.com)



- **Living Stones Memorial:** <http://klik.to/memorial>

**Online memorial rituals**

**Held on the last Friday of the month at 9pm UK**

**Place: Living Stones Memorial Shrine. Ritual Room:** <http://klik.to/memorial>

**Contact: Lady Anna:** [annahp@btinternet.com](mailto:annahp@btinternet.com) or **Rev. Mick:** [dotnmick@tiscali.co.uk](mailto:dotnmick@tiscali.co.uk) or **Rev.**

**Mehitabel:** [coatimundi@btinternet.com](mailto:coatimundi@btinternet.com)

**Forum:** <http://uk.groups.yahoo.com/group/LSMemorial/>

- **The Order of Reiki:** <http://klik.to/reikiorder>

**The Order of Reiki takes healing requests. Please go to the Order web site and fill in the healing request form.**

**The Order of Reiki also teaches many disciplines of Reiki. If you are a Reiki Master/Teacher and would like to teach your discipline through the Order for the Tradition please contact Lady Anna:** [annahp@btinternet.com](mailto:annahp@btinternet.com)

- **Witan Shrine 'Hall of the Ancestors' Class Offerings**

**Correllian Nativist Tradition 1st Degree Take this course to learn about the Correllian Nativist Tradition and earn the ability to apply for Correllian 1st Degree Clergy status.**

**Meditation Made Simple. Learn easy methods to attaining clarity of mind. There is a weekly assignment given to work at your own pace.**

**Usui Reiki**

**Learn how to administer treatments to yourself and others utilizing universal energy. In this class setting, you can earn certification up to Master/Teacher level. There will be required reading, hands on training, and assignments to be eligible to earn your Degrees.**

**Please email Rev. Lee for more information on all of the Hall of Ancestors courses:**

[hoancestors@hotmail.com](mailto:hoancestors@hotmail.com)

**Join the Yahoo group:** <http://groups.yahoo.com/group/hoancestors/>

## Faces of Correllianism

<http://www.correllian.com/faces.htm>

**"Faces of Correllianism" is a place where Correllians can send photos of themselves, their altars, their pets, as well as artwork, autobiographies, descriptions of events and projects, essays and poetry to share with all Correllians. Through "Faces of Correllianism" we hope to show what a strong, diverse, and positive community we are.**

**If you would like to have your photo, writing, or artwork included, please email it to me at [DonLewisHP@aol.com](mailto:DonLewisHP@aol.com) together with your authorization to use it at [www.correllian.com](http://www.correllian.com). You will of course retain any copyright. Please do not send us anything that is copyrighted to anyone other than yourself, unless you include their permission.**

## Correllian Calendar

<http://www.correllian.com/calendar.htm>

**All tradition events can be found in the Correllian Calendar**

## Adventures

<http://www.correllian.com/adventures.htm>

**Check out the adventures page on [Correllian.com](http://www.correllian.com) and find out what other Correllians have been doing**

## Symbols & Robes

<http://www.correllian.com/symbolsandrobes.htm>

**Explanations of some of the symbols and robes used by the Correllian Tradition**

## Correllian Orders

- Order of World Walkers Order Head Rev. Krystel High-Correll, HP
- Order of Translators Joint Heads of Order Rev. Yoko and Rev. Mishka
- Order of Deemsters Order Head Rev. Don Lewis, HP
- Order of Paladins Order Head Rev. Traci Wood HP
- Order of Heralds Order Head Rev. Don Lewis, HP
- Order of Artificers Order Head Rev. Don Lewis, HP
- Order of Web Weavers Order Head Rev. Windy LaJoie, HP
- Order of Herbal Studies Order Head - Rev. Jackie Coyle
- Order of the Muses Order Head Rev. Don Lewis, HP
- Order of Reiki Order Head Rev. Anna Rowe HP
- Order of Ares Order Head Christopher Stoeckel
- Order of Wiccan Educators Order Head Rev. Boudicca
- Order of Thanatos Order Head Rev. Isarma Crain
- Morning Glory Order Order Head Rev. Don Lewis
- Order of Recovering Correllians Order Heads: Rev. Windy Lajoie, HPs
- Order of Defenders Order Head: Rev. Lee Fluhr
- Order of Cerrunos Joint Order Heads: Rev. Obsidian Butterfly and Silent Dragon
- Order of Bast Order Head Rev. Anna Rowe HPs
- Order of Sirius Order Head Rev. Anna Rowe HPs
- Order of Hesychia Contemplative Order. Order Head Rev. Debbe Tomkins HPs
- Order of the Eagle. Order Head Rev. Stephanie Neal HPs

### Orders which are awarded only rarely and in recognition of extreme accomplishment

- **The Order of Orpheus:** The Order of Orpheus is awarded to people in recognition of outstanding services to the Correllian Tradition.
- **The Order of the Round Table:** The Order of the Round Table is awarded to people in recognition of outstanding services to the Pagan community.
- **The Order of Tsalv:** The Order of Tsalv (Selu) is awarded to people in recognition of outstanding services the cause of peace in the world.

**In addition to the above Orders which are awarded only rarely and in recognition of extreme accomplishments, we have also Meritorious Orders awarded twice yearly at the Lustrations, to recognize the work and achievements which keep our Tradition running on a daily basis.**

- **The Order of the Copper Athame.** The Order of the Copper Athame is awarded for outstanding service in the field of the occult or mundane Sciences.
- **The Order of the Golden Wand.** The Order of the Golden Wand is awarded for outstanding service in the field of Service to Others.
- **The Order of the Silver Chalice.** The Order of the Silver Chalice is awarded for outstanding service in the field of the Arts.
- **The Order of the Iron Pentacle.** The Order of the Iron Pentacle is awarded for outstanding service in the field of teaching.
- **The Order of the Thurible.** The Order of the Thurible is awarded for outstanding service in the field of Spirituality.

**For more information on all Correllian Orders please go to: <http://www.correllian.com/Orders.htm>**

## Correllian E-groups

- **Astrology** <http://groups.yahoo.com/group/SednaAstrology/>
- **Automatic Writing** <http://uk.groups.yahoo.com/group/Automatic-Writing/>
- **Correllian Brazil** <http://groups.yahoo.com/group/CW-Brazil/>
- **Correllian Clergy** <http://groups.yahoo.com/group/CorrellianClergy/>
- **Correllian Clergy Mentors** <http://groups.yahoo.com/group/CorrellianClergyMentors/>
- **Correllian Order Heads** <http://groups.yahoo.com/group/CorrellianOrders/>
- **Correllian Outer Court** <http://groups.yahoo.com/group/CNT-ouercourt/>
- **Correllian Personal Shrine** (Personal Shrine Heads only)  
<http://groups.yahoo.com/group/shrines/>
- **Correllian Portuguese Language Group** <http://groups.yahoo.com/group/CW-Potuguese/>
- **Correllian Social Club** <http://groups.yahoo.com/group/CorrellianSocialClub/>
- **Correllian Spanish Language Group** <http://groups.yahoo.com/group/CW-Espanol/>
- **Correllian Study Group Keepers** [http://uk.groups.yahoo.com/group/ws\\_eu\\_students/](http://uk.groups.yahoo.com/group/ws_eu_students/)
- **Correllian Temple Heads** (Temple, Witan & Formal Shrine Heads only)  
<http://groups.yahoo.com/group/CorrellianTemple/>
- **Correllian UK** [http://groups.yahoo.com/group/correllian\\_wicca\\_uk/](http://groups.yahoo.com/group/correllian_wicca_uk/)
- **Correllian Wicca EU** <http://uk.groups.yahoo.com/group/CW-EU/>
- **Correllian World** <http://groups.yahoo.com/group/correllianworld/>
- **Deities & Celebrations (new)** <http://groups.yahoo.com/group/DeitiesCelebrations/>
- **Order of Bast** <http://uk.groups.yahoo.com/group/Order-of-Bast/>
- **Order of Herbal Healers** <http://groups.yahoo.com/group/CTHO/>
- **Order of Paladins** <http://groups.yahoo.com/group/OrderOfPaladins/>
- **Order of Reiki** <http://health.groups.yahoo.com/group/Order-of-Reiki/>
- **Order of Sirius** <http://uk.groups.yahoo.com/group/OrderOfSirius/>
- **Order of The Muses** <http://groups.yahoo.com/group/OrderOfTheMuses/>
- **Order of The Web Weavers** [TheOrderofWebWeavers@yahoo.com](mailto:TheOrderofWebWeavers@yahoo.com)
- **Order of The Eagle** <http://groups.yahoo.com/group/Order-of-the-Eagle/messages/1>
- **Poetry** [http://groups.yahoo.com/group/Isis\\_Wiccan\\_PoetryGroup/](http://groups.yahoo.com/group/Isis_Wiccan_PoetryGroup/)
- **Runes** <http://uk.groups.yahoo.com/group/SednaRunes/>
- **Witan Council** (Elders, Temple Heads and Notables only)  
<http://groups.yahoo.com/group/WitanCouncil/>
- **Witan Heralds Court.** Announcement only group (Temple/ Shrine/Order/Study Group Heads) <http://groups.yahoo.com/group/WitanHeraldsCourt/>

## Other Correllian Publications

### The Correllian Times

The magazine for the Correllian people!

Subscribe to the Correllian Times. A special E-list has been established for the Correllian Times. [http://groups.yahoo.com/group/the\\_Correllian\\_Times\\_magazine](http://groups.yahoo.com/group/the_Correllian_Times_magazine)

The Correllian Times magazine is now available by subscription. Excerpts from the magazine are available free of charge in the above e-list. Featuring articles, reports on events, photos, artwork, poetry, and more!

For subscriptions and submission for the Correllian Times please contact **Lady Windy windy0716@aol.com**

## Correllian Herald Subscriptions

**Subscribe to the Correllian Herald:** *CorrellianHerald-subscribe@yahoogroups.co.uk*  
**E-group:** *<http://uk.groups.yahoo.com/group/CorrellianHerald/>*

**The Correllian Herald is best viewed in PDF Format:**  
*CorrellianHerald-pdf-subscribe@yahoogroups.com*

**E-group:** *<http://groups.yahoo.com/group/CorrellianHerald-pdf/>*

**If you have a Temple, Shrine or Order event you wish to advertise. Please send details to:** *correllianheraldeditor@gmail.com*

**Please ensure you include dates time places and contact details for all your Announcements and events.**

*Disclaimer: You are responsible for all submissions please ensure that all links are working the staff of the Correllian Herald do not check for working links.*

*Managing Editor: Rev. Anna Rowe HPs*  
*Co-Editor: Rev. Mary Keller HPs*

**Send your adverts, articles and inclusions to:**  
*correllianheraldeditor@gmail.com*

**If you would like to write articles or be an online reporter for the Herald please contact the Herald editor:** *correllianheraldeditor@gmail.com*